

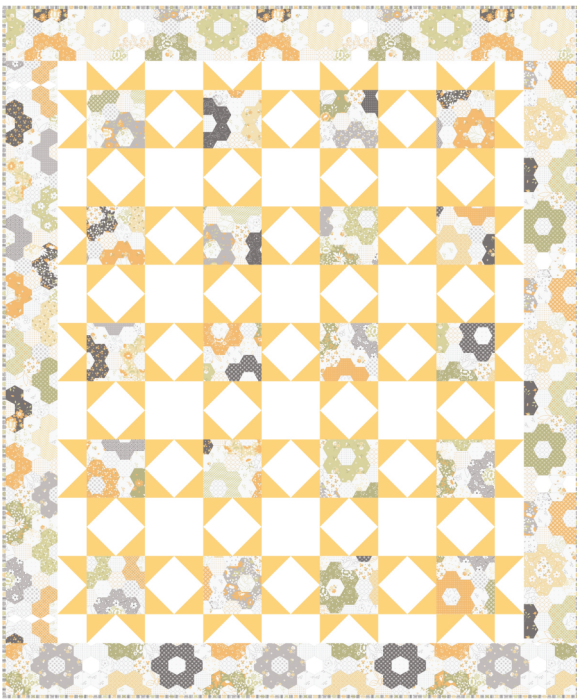
Granny's Stars Quilt Pattern

56" x 68"

Featuring fabrics from the Buttercup & Slate collection by Corey Yoder of Coriander Quilts for Moda Fabrics.

Fabric Requirements

- 1 3/4 yards yellow fabric for star points (29158-13)
- 2 1/4 yard white fabric for background (29152-11)
- 2 yards 60" wide Grandmother's Flower Garden fabric for block centers and borders (29150-11)
- 2/3 yard binding fabric (29157-11)
- 3 3/4 yards backing fabric (29151-11)
- 64" x 76" piece of batting



Cutting Instructions

wof = width of fabric

From the yellow fabric cut:

(15) strips 3 1/2" x wof; subcut (160) squares, 3 1/2" x 3 1/2" **(A)**

From the white fabric cut:

(6) strips 3 1/2" x wof; subcut (32) rectangles, 3 1/2" x 6 1/2" **(B)**

(8) strips 6 1/2" x wof; subcut (43) squares, 6 1/2" x 6 1/2" **(C)**

(4) squares, 3 1/2" x 3 1/2" **(D)**

From the binding fabric cut:

(7) strips 2 1/2" x wof; trim selvages and sew end to end to create continuous binding

From the Grandmother's Flower Garden Fabric cut:

(2) side borders **along the length of the fabric**, 4 1/2" x 60 1/2" **(E)**

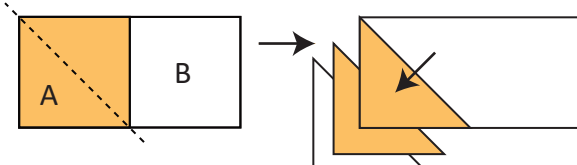
(2) side borders **along the length of the fabric**, 4 1/2" x 56 1/2" **(F)**

From the remaining Grandmother's Flower Garden fabric cut:

(20) squares, 6 1/2" x 6 1/2" **(G)**

Piecing Instructions

1. Draw a diagonal line across the back of a yellow **(A)** square. Place the **(A)** square right sides together on the corner of a white **(B)** rectangle. Orient the diagonal as illustrated. Sew on the marked line. Press away from the center. Make sure all raw edges align. Trim out the bottom two layers leaving a 1/4" seam allowance.

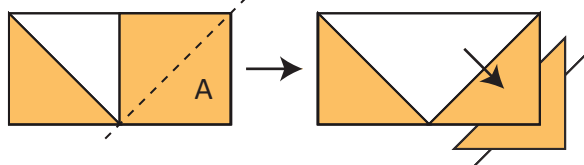


@corianderquilts



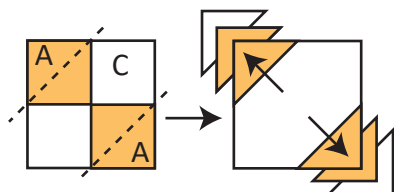
corianderquilts.com

2. Repeat step 1 on the opposite corner as illustrated. The completed Flying Geese unit will measure $3\frac{1}{2}'' \times 6\frac{1}{2}''$. Repeat to make a total of 18 Flying Geese units.

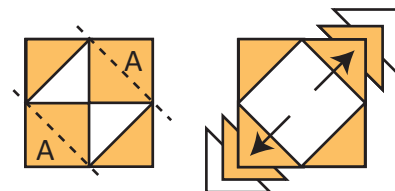


Make 18 Flying Geese.

3. Draw a diagonal line across the back of 4 yellow (A) squares. Place one (A) square on the top left corner of a white (C) square and one (A) square on the bottom right corner of the square as shown below. Orient the diagonals as illustrated. Sew on the marked lines. Press away from the center. Make sure all raw edges align. Trim out the bottom two layers leaving a $\frac{1}{4}''$ seam allowance. The unit measures $6\frac{1}{2}'' \times 6\frac{1}{2}''$.



4. Repeat step 3 on the two opposite corners to complete one square in a square block. The block measures $6\frac{1}{2}'' \times 6\frac{1}{2}''$. Repeat to make a total of 31 square in a square blocks.



Make 31 Square in a Square blocks.

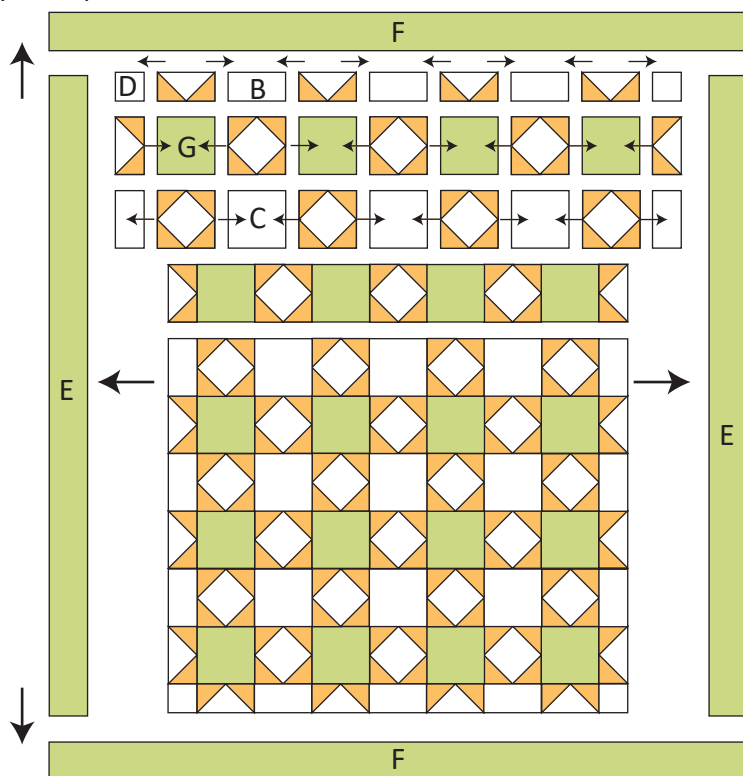
Quilt Top Construction

1. Lay out the quilt top as shown below using the Flying Geese units, Square in a Square blocks, 14 white (B) rectangles, 12 white (C) squares, 4 background (D) squares, and 20 Grandmother's Flower Garden (G) squares.

2. Sew the rows together pressing towards the *non-pieced* units in each row. Sew the rows together. Press in one direction. The quilt center will measure $48\frac{1}{2}'' \times 60\frac{1}{2}''$.

Add the Borders (Press all seams away from the center)

1. Sew (E) borders to the sides of the quilt. Sew (F) borders to the top/bottom of the quilt. The completed quilt top measures $56\frac{1}{2}'' \times 68\frac{1}{2}''$.



Finishing the Quilt

Baste the quilt top, batting and backing* fabric together using your preferred method. Quilt as desired and bind using the $2\frac{1}{2}''$ prepared binding strips.

*To prepare your backing: Cut the backing fabric into two pieces $65'' \times$ width of fabric. Sew the pieces together to form backing that will measure approximately $65'' \times 84''$.

